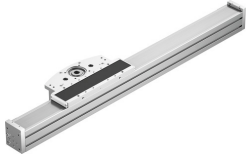


Cantilever linear actuator ELCC-TB-KF-90-200-0H-P0-CR

Part number: 8082399

FESTO



Data sheet

| Feature | Value |
|---|-----------------------------------|
| Drive pinion effective diameter | 50.93 mm |
| Working stroke | 200 mm |
| Size | 90 |
| Stroke reserve | 0 mm |
| Toothed belt pitch | 5 mm |
| Type code | ELCC |
| Mounting position | Any |
| Guide | Recirculating ball bearing guide |
| Structural design | Electromechanical cantilever axis |
| Symbol | 00991210 |
| Max. acceleration | 30 m/s ² |
| Max. speed | 5 m/s |
| Repetition accuracy | ±0.05 mm |
| Corrosion resistance class (CRC) | 0 - No corrosion stress |
| Degree of protection | IP20 |
| Ambient temperature | -10 °C ... 60 °C |
| 2nd moment of area Iy | 2667900 mm ⁴ |
| 2nd moment of area Iz | 2049490 mm ⁴ |
| Max. driving torque | 33 Nm |
| Max. force Fy | 13957 N |
| Max. force Fz | 13523 N |
| Max. torque Mx | 167 Nm |
| Max. torque My | 1300 Nm |
| Max. torque Mz | 1233 Nm |
| Max. feed force Fx | 1200 N |
| Mass moment of inertia JH per meter of stroke | 62.9 kgcm ² |
| Mass moment of inertia JL per kg of payload | 6.5 kgcm ² |
| Mass moment of inertia JO | 55.2 kgcm ² |
| Feed constant | 160 mm/U |
| Reference value, running performance | 5000 km |
| Lubrication interval, distance dependent | 1000 km |
| Moving mass at 0 mm stroke | 5487 g |
| Additional weight per 10 mm stroke | 97 g |
| Basic weight with 0 mm stroke | 14787 g |
| Additional moving mass per 10 mm stroke | 97 g |
| Material of end caps | Wrought aluminum alloy, anodized |

| Feature | Value |
|--|--|
| Profile material | Wrought aluminum alloy, anodized |
| Note on materials | Contains paint-wetting impairment substances RoHS-compliant |
| Drive head material | Wrought aluminum alloy, anodized |
| Guide rail material | Rolled steel, Corrotect coated |
| Housing material | High-alloy stainless steel |
| Slide material | Cast aluminum, anodized |
| Toothed belt clamping component material | Wrought aluminum alloy, anodized |
| Toothed belt material | Polychloroprene with glass cord and nylon coating |